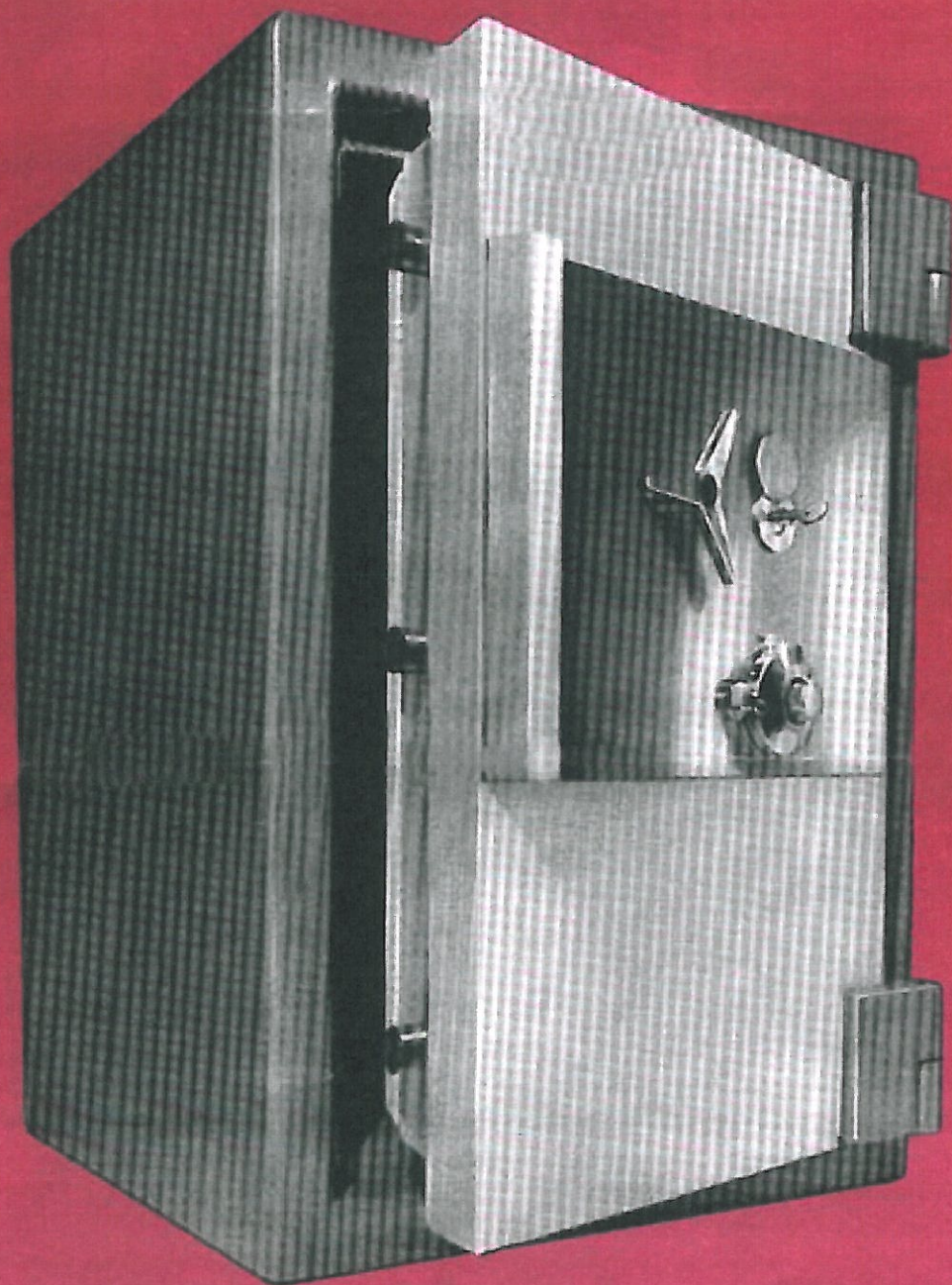


CHATWOOD-MILNER

MONARCH

MONEY AND JEWELLERY SAFES

**OXYACETYLENE EXPLOSIVE
AND DRILL RESISTIVE**



Modern techniques versus modern criminals, that is the philosophy behind the Chatwood Milner Monarch Acme Safe.

It is a safe which will resist all forms of attack, for today's safebreaker is practised in up-to-the-minute metal cutting techniques, skilled in the use of explosives and an experienced operator with an armoury more extensive, lethal and scientific than ever before.

It is science that has given the safecracker these new opportunities and it is science that has given the safemaker the means to combat them.

The Chatwood Milner Monarch Acme Safe is the product of exhaustive research into protective materials and techniques. The core of its protection is Chatwood Milner torch and drill resisting armour, a composite with a matrix of thermal strength and toughness incorporating inclusions to resist drilling.

Advanced manufacturing techniques have enabled Chatwood Milner engineers to produce a safe body in a single cast unit of consistent strength. Added to this is Chatwood Milner isolator boltwork, a revolutionary design of locking mechanism, which not only provides highly sophisticated drill protection but incorporates advanced techniques for protection against explosive attack.

SPECIFICATION

Door 7½in thick and rectangular the door is constructed from outer and inner steel plates continuously welded to form a single structure and enclosing a 2in thick solid layer of *Chatwood Milner torch and drill resisting armour* to produce a total metal thickness of 2½in. The total strength of this door is to effectively resist electric drills, oxy-acetylene torches, forcing tools, sledgehammers and explosives. The boltwork chamber is protected over its whole area by torch and drill resisting armour, the whole making up a super burglar resistive door.

Body By enclosing a 2in thick solid layer of *torch and drill resisting armour* which has been cast into (1) piece in a steel outer and inner lining Chatwood Milner engineers have produced a safebody of exceptional strength. This 2in thick solid layer of torch and drill resisting armour cast in one (1) piece eliminates the necessity of welding five (5) slabs of material together to form a body. Welded slabs produce weak welded seams. The Chatwood Milner one (1) piece cast construction has *no weak welded seams*. This one (1) piece construction eliminates the possibility of *de-slabbing* the entire top, sides, bottom or back of the safe as is possible with a safe manufactured with slab construction. This construction also eliminates the possibility of weak seams splitting open when explosives or wedges are used because Chatwood Milner construction does not produce a slab constructed safe with weak welded seams. *We would appreciate the chance to review this important feature with you.*

Boltwork 1½in diameter steel sliding bolts extend from all four (4) sides of the door to ensure a solidarity with the body. The 2in thick solid layer of *torch and drill resisting armour* protects the boltwork and locking mechanism from every angle. On closing the combination lock or keylock the internal boltwork mechanism is disconnected from the external turn handle. The handle revolves free as though it were broken, without any possibility of re-engaging the internal boltwork mechanism until the proper combination numbers are used to open the combination lock and the proper key used to open the keylock. Any attempt to force an entry by dislodging the combination lock or keylock is thereby defeated since with the handle and boltwork system disconnected from one another there is no means of retracting the four (4) way boltwork system. Also by dislodging the combination lock and keylocking mechanisms or cutting the holding arms to the boltwork frames, the internal boltwork system relocks within itself not allowing the bolts to be withdrawn into an open position. Relocking devices are incorporated in the locking system to ensure that the bolt throwing mechanism remains positively locked in the extended position under various types of burglary attack. *We would appreciate the chance to review this important feature with you.*

Combination Lock with spy proof dial Five (5) movement spy proof dial combination lock is capable of 100,000,000 different combination changes. It is virtually pick proof. The spy proof dial design prevents unauthorised individuals from seeing the numbers dialled when you are operating the dial to unlock the combination lock.

Dial Check Lock You can keylock the dial in the combination lock in the open or closed position. This prevents the dial from being moved. During the day when the combination lock is in the open position the dial cannot be turned and thereby the safe accidentally locked. When you close the combination lock, upon leaving the premises, you can again lock the dial so that it cannot be turned by any unauthorised intruders who may try to manipulate the lock.

Change your own combination – whenever you wish Since security is the prime purpose of this safe, the combination is set by the individual responsible for the contents of the safe. No unauthorised person should know the combination numbers. We supply simple written instructions to you so that you can change your own combination at regular intervals.

Keylocking lock This lock is a double bitted keylock with ten (10) tumblers. This is a key retaining lock which means that the key cannot be withdrawn from the lock unless the bolts are thrown into a closed position and the key turned to a locked position. This ensures that the key cannot be removed from the lock unless the locking mechanisms are locked. This prevents you from accidentally removing the key from the keylock while the lock is in the open position and leaving the premises. Ten (10) tumblers on a keylock is like having ten (10) numbers to open a combination lock. This lock is virtually pick proof.

Important When leaving the premises be certain that the combination lock and the keylock are locked. Do not assume that when either lock is locked that it is doing the same job as when both locks are locked.

Smoke Detection Due to the type of materials used in the construction of this safe a great deal of smoke is produced when heat is applied. This heavy smoke is disagreeable to the burglar and if the smoke detection alarm is in use, it should automatically operate.

Time Lock of 2 or 3 movement 120 hour design can be incorporated in the locking mechanism. The time lock operates independently of any other locking mechanism in the safe. Preset to go off at a selected time the lock prevents the safe from being opened until the correct time is reached even if the other locking mechanisms have been unlocked. (Optional equipment).

Cupboards Cupboards are constructed of sheet steel suitably reinforced and secured by a keylock with keys in duplicate. The internal height of the cupboard can be made to suit your exact requirements. The most common sizes are 12in and 15in high inside. The overall width of all cupboards is 1in less than the internal width of the safe, the overall depth of all cupboards being 1in less than the internal depth of the safe (optional equipment).

Fittings The fitting supports are formed in the sides of the lining, the fittings being designed so that they can be adjusted at 1¼in intervals. The drawers are of steel secured by a keylock with keys in duplicate. The drawers are mounted between two shelves secured to the supports by vertical clips. They are supplied either as one full-width drawer or two drawers side by side. The shelves are of sheet steel flanged and secured to the support by clips (optional equipment).

Size of Drawers

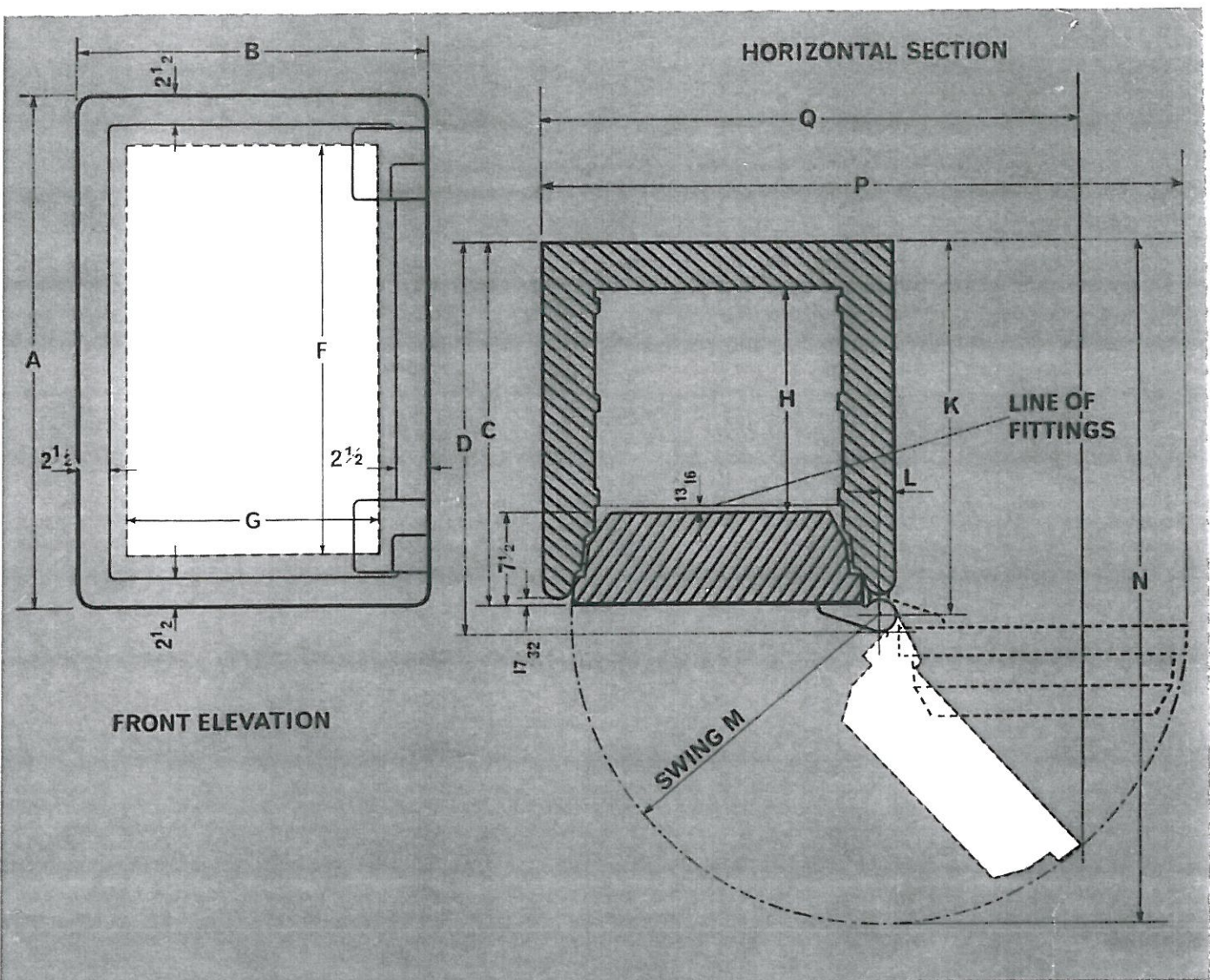
	inside size of drawer		
	high	wide	
		full width	half width
221515	4in	13¾in	6½in
342019/4620	4in	18¾in	8½in
552019	4in or 6in	18¾in	8½in
642817/21	6in		13½in
fitment overall			
	deep	high	
221515	12⅞in	5⅞in	
342019/4620	16⅞in	5⅞in	
552019	16⅞in	7⅞in	
642817	14⅞in	7⅞in	
642821	18⅞in	7⅞in	

FINISH

The Monarch Acme safe is finished in 2-tone grey.

Medium grey body – light grey door.

The furniture is mounted on a stainless steel panel complete with stainless steel pull handle.



INTERNAL AND EXTERNAL DIMENSIONS OF THE 'MONARCH ACME' SAFES

ALL DIMENSIONS ARE IN INCHES

MODEL	OUTSIDE DIMENSIONS					INSIDE DIMENSIONS			FOR SWING			OVERALL SIZES DOOR OPEN		
	Height A	Width B	Depth of Body C	Depth over Hinge D	Depth over Handle E	Height F	Width G	Depth H	K	L	M	N	P	Q*
221515	31	24 1/2	26 1/2	28 3/4	29	22	15	15	27 3/8	1 1/4	20 3/4	48 1/8	44	37
342019	43	29 1/2	30 1/2	32 3/4	33	34	20	19	31 3/8	1 1/4	25 3/4	57 1/8	54	45 3/8
462019	55	29 1/2	30 1/2	32 3/4	33	46	20	19	31 3/8	1 1/4	25 3/4	57 1/8	54	45 3/8
552019	64	29 1/2	30 1/2	32 3/4	33	55	20	19	31 3/8	1 1/4	25 3/4	57 1/8	54	45 3/8
642817	73	37 1/2	28 1/2	30 3/4	31	64	28	17	29 3/8	1 1/4	33 3/4	63 1/8	70	58 3/8
642821	73	37 1/2	32 1/2	34 3/4	35	64	28	21	33 3/8	1 1/4	33 3/4	67 1/8	70	58 3/4

Door opened to give full width access to interior of safe

MODEL	Approx. Cu. Cap.	Approx. Total Weight lb	Approx. Weight Door lb	Approx. Weight Body lb
221515	2.87 ft 4950 in	1624	416	1208
342019	7.47 ft 12920 in	2576	725	1851
462019	10.1 ft 17480 in	3248	1034	2214
552019	12.1 ft 20900 in	3640	1111	2529
642817	17.63 ft 30464 in	4592	1662	2930
642821	21.76 ft 37632 in	5040	1662	3378

LACKASAFE.com

1-800-654-5213