

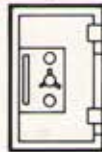
DIMENSIONS AND WEIGHTS



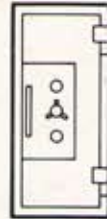
JS 1616



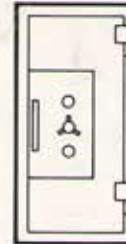
JS 2316



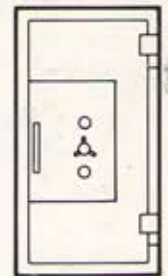
JS 3520



JS 5520



JS 6032



JS 7232

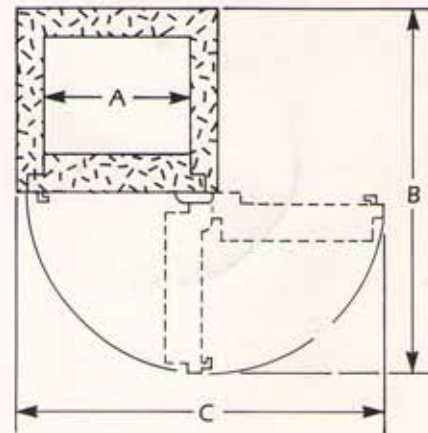
MODEL	INSIDE DIM.			OUTSIDE DIM.			CUBIC CAPACITY	DOOR WEIGHT	BODY WEIGHT	APPROX. TOTAL WEIGHT
	H	W	D	H	W	D*				
JS 1616	16.0" (0.407m)	16.0" (0.406m)	12.6" (0.319m)	23.0" (0.585m)	23.0" (0.585)	23.4" (0.594m)	3,236" 1.9 cu.ft.	210 lbs (95kg)	660 lbs (300kg)	870 lbs (395kg)
JS 2316	23.0" (0.585m)	16.0" (0.406m)	14.0" (0.355m)	30.0" (0.763m)	23.0" (0.584m)	24.8" (0.630m)	5,152" 3.0 cu.ft.	265 lbs (120kg)	835 lbs (380kg)	1100 lbs (500kg)
JS 3520	35.0" (0.890m)	20.0" (0.508m)	18.8" (0.477m)	42.0" (1.068m)	27.0" (0.686m)	29.6" (0.752m)	13,160" 7.6 cu.ft.	440 lbs (200kg)	1340 lbs (610kg)	1780 lbs (810kg)
JS 5520	55.0" (1.398m)	20.0" (0.508m)	18.8" (0.477m)	62.0" (1.576m)	27.0" (0.686m)	29.6" (0.752m)	20,880" 12.0 cu.ft.	630 lbs (285kg)	1870 lbs (850kg)	2500 lbs (1135kg)
JS 6032	60.0" (1.525m)	32.0" (0.813m)	18.8" (0.477m)	67.0" (1.703m)	39.0" (0.991m)	29.6" (0.752m)	36,696" 20.9 cu.ft.	980 lbs (445kg)	2485 lbs (1130kg)	3465 lbs (1575kg)
JS 7232	72.0" (1.829m)	32.0" (0.813m)	26.0" (0.660m)	79.0" (2.007m)	39.0" (0.991m)	36.8" (0.935m)	59,904" 34.7 cu.ft.	1145 lbs (520kg)	3080 lbs (1400kg)	4225 lbs (1920kg)

*Add 2½" (65mm) to outside depth for handle.

DOOR SWING DIMENSIONS

MODEL	A	B	C
JS 1616	16.0" (0.406m)	44.4" (1.128m)	42.6" (1.080m)
JS 2316	16.0" (0.406m)	45.8" (1.164m)	42.6" (1.080m)
JS 3520	20.0" (0.508m)	54.6" (1.388m)	50.6" (1.284m)
JS 5520	20.0" (0.508m)	54.6" (1.388m)	50.6" (1.284m)
JS 6032	32.0" (0.813m)	66.7" (1.693m)	74.6" (1.894m)
JS 7232	32.0" (0.813m)	73.9" (1.876m)	74.6" (1.894m)

DOOR SWING PROJECTIONS



Megasafe Industries reserves the right to incorporate any improvements and alter any specifications without prior notice.