



**SLS**  
SECURITY



**SLS Gem Anti-lance** (US. UL. TXTL. 60)  
Unique six-sided protection against the Thermic Lance.

# SLS Gem Anti-Lance Range

The SLS Gem Anti-Lance range of safes offers unique protection for the priceless.

It gives full six-sided protection against all forms of attack including the formidable Thermic Lance.

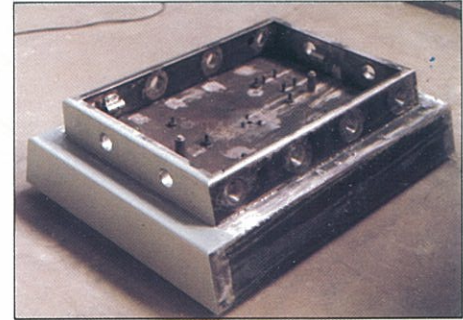
The safe door and body consist of sophisticated castings comprising of copper/zac nuggets, and stainless steel/zac nuggets, cast as an integral unit. This unique barrier matrix encases on six sides an additional material designed to resist the Thermic Lance. The minimum protective thickness is 6 1/8" / 156mm.

The safe has been independently tested by the Underwriters Laboratory Inc, Chicago against torch, tool and multiple explosive attack (US UL TX TL60) and passed with a substantial margin of protection.

The Thermic Lance resistance of this unit is at least 12 times greater than that of any Bankers quality safe currently being manufactured.



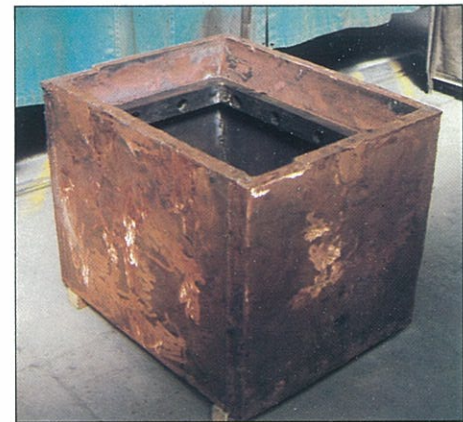
*SLS Thermic Lance Testing*



*Massive Safe Door Fabrication*



*UL Torch/Tool Attack on Safe Door Jamb*



*One Piece Composite Body Casting*



*UL Explosive Testing*