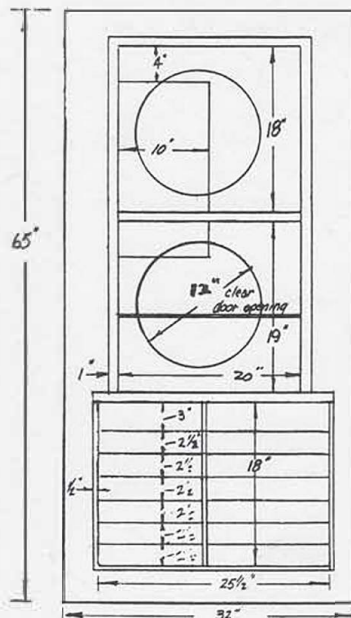
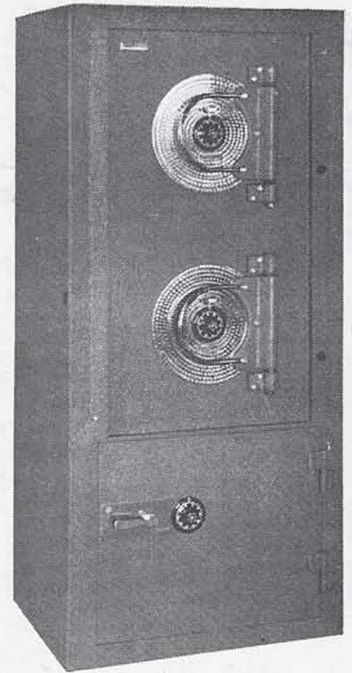


# MAJOR SAFES

AMERICA'S FINEST



## "ER" RATED SUPER MARKET DEPOSITORY CHEST Model No. M13-R1



**MAJOR SAFE  
MARKET DEPOSITORY  
& TILL STORAGE  
MONEY CHESTS**

### INSURANCE SPECIFICATIONS:

Round Type Tri-Bolt Chest — Mercantile "ER" rated — less 10% for Underwriters' Laboratories, Inc., Relocking Device Label.

Rectangular Chest—Mercantile "C" rated and equipped with heavy bolts; does not depend on the tongue of the lock for the bolt system.

The upper compartment of this Delux Super Market Unit is conveniently arranged with a removable shelf. A spacious deposit chute with the opening in the upper left hand corner; deposits over a baffle protected lower chest with a removable shelf. Both doors may be equipped with 72 or 120 hour time locks. This arrangement makes it possible to add to the money behind the time locked compartment. The lower receiving chest is equipped with a key locking SPY-PROOF dial for dual control operation for armored pickup service.

Rectangular lower chest is designed for storage of cash register trays, N.C.R. change dispenser coin holders, large bags of coin and other valuables. Special interiors for individual till or N.C.R. coin holders may be furnished. Till storage shown—shelf furnished only if specified.

DIMENSIONS				CUBIC INCH CAPACITY	CLEAR DOOR OPENING	SHIPPING WEIGHT LBS.
	HIGH	WIDE	DEEP			
OUTSIDE O.D.	65"	32"	28"	APPROX. 22,700	12"	EMPTY
INSIDE UPPER CHEST	18"	20"	20"			2302
LOWER RECTANGULAR CHEST	18"	25 1/2"	21 1/2"			FILLED 4200

LOOK FOR THESE LABELS — THEY INSURE YOU TOP SECURITY

